

# SUNOVA



## Why Sunova?

- Four innovative floorplans
- Swivel Ultraleather™ cab seats
- MCD solar/blackout roller shades (MCD blackout roller shade in galley)
- Corian® galley countertops
- Available StudioLoft™ drop-down bed
- Extendable U-shaped dinette (30A)
- Choice of queen or king bed (30A queen only)
- Leveling jacks with 3-position controls
- Powered patio awning with LED lighting



ON THE COVER: 35G Black Mist Full-Body Paint

35G Biscotti with Honey Cherry Cabinetry

## TAKE THE SCENIC ROUTE

The question for motorhome enthusiasts looking for a truly exceptional Class A coach is not “should I buy an Itasca Sunova®?” But, rather, “which Sunova should I choose?” With four distinct models, including the spacious 35G with inLounge™ extendable sectional sofa and movable inTable,™ there is a Sunova that is perfect for you and your family. Popular features such as LED lighting, Corian® galley

countertops, and MCD solar/blackout roller shades (MCD blackout in galley) make it easy to call the Sunova home. This year, we have added an available StudioLoft™ drop-down cab bed for even more travel flexibility. Add in Winnebago Industries® legendary construction quality and your decision is even easier—it is the Itasca Sunova.



**RECOGNIZED QUALITY** The RV Dealers Association bestows its annual Quality Circle Award based on dealer ratings to manufacturers that provide exceptional products, service and support. Only one manufacturer has received this award for seventeen consecutive years: Winnebago Industries®.

## BEST IN CLASS

See how Winnebago Industries takes motorhome design and function to the next level, and why we've earned the right to be called the Most Recognized Name in Motorhomes.®



Click on this icon throughout the brochure to link to more information on the web.



The **Dash Workstation** is the perfect place to plan your trip.



Keep your clothes fresh and clean wherever you go when you add the available **Washer/Dryer** (33C, 35G).



Day or night, the smoothly-retracting **MCD Solar/Blackout Roller Shades** give you total control over light and privacy levels.



The color-coded **Exterior Service Center** with QuickPort® service connection hatch will have you set up at the campsite in no time.



The **inLounge™** becomes exactly what you need it to be; a sofa, dining seating, or an additional space for sleeping.



35G Biscotti with Honey Cherry Cabinetry

With four feature-rich floorplans, the Sunova lounge can be customized to your preferences. Whether you want an extendable U-shaped dinette sectional (30A), an inLounge™ extendable sofa, movable inTable™, and available fireplace (35G), or an Extendable Sectional Sofa (36V), there is a lounge arrangement to suit your needs. Kick back and relax in the Ultraleather™ hoop-base recliner that swivels, has a built-in foot rest, and can be moved to your favorite spot when you're not traveling. At the end of a long day, unwind in front of the large HDTV and available Home Theater Sound System with DVD Player.



Ultraleather Hoop-Base Recliner



35G Galley

You'll enjoy preparing meals in your galley, with impressive amenities such as a microwave/convection oven, a three-burner range top, and an available four-door refrigerator/freezer with an icemaker (NA 30A). The drawers on full-extension slides and the pantry provide an abundance of storage space, while the Corian® solid-surface countertops and matching sink covers offer plenty of preparation space.



35G Available Four-Door Refrigerator/Freezer with Icemaker



35G inTable™ as Additional Counter Space



35G Available Four-Door Refrigerator/Freezer with Icemaker



35G Pull-Out Cabinet



Full-Extension Drawer Slides

The Sunova offers multiple dining options to meet your preferences, from an extendable U-shaped dinette (30A) to an elegant, extendable dining table/buffet and chairs with a 39" retractable HDTV (Available 33C), or a spacious BenchMark® full comfort dinette (33C and 36V). The inLounge™ sofa extends to seat your guests comfortably. Pull up the movable inTable™ for instant dining for six (35G).



35G inLounge and inTable



35G inLounge and inTable

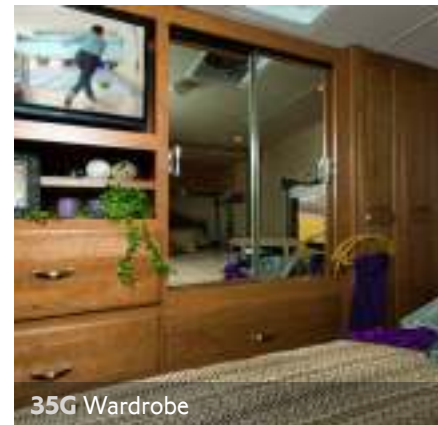
Relax after a long day in your walk-around queen or available king (NA 30A) bed, with the standard HDTV that is connected to the coach DVD system. With a chest of drawers on most models and spacious wardrobes, you'll have plenty of space to store your traveling necessities as well as any extras.



35G Powered Bed



35G Powered Bed (up)



35G Wardrobe



Bedroom HDTV





35G Bathroom

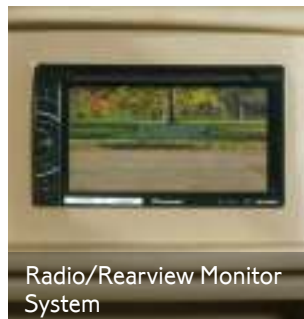


35G Shower



Dash

Pilot your Sunova with confidence, thanks to the rearview color monitor system, easy-to-read controls and the six-way power Ultraleather™ driver's seat. An iPod®/MP3 input and available SiriusXM™ satellite radio (subscription not included) offer hours of entertainment while on the road. Your co-pilot will appreciate the extra space provided by the dash workstation. Both cab seats swivel to face the lounge area, enhancing your living space while parked.



Radio/Rearview Monitor System



Cab Seats



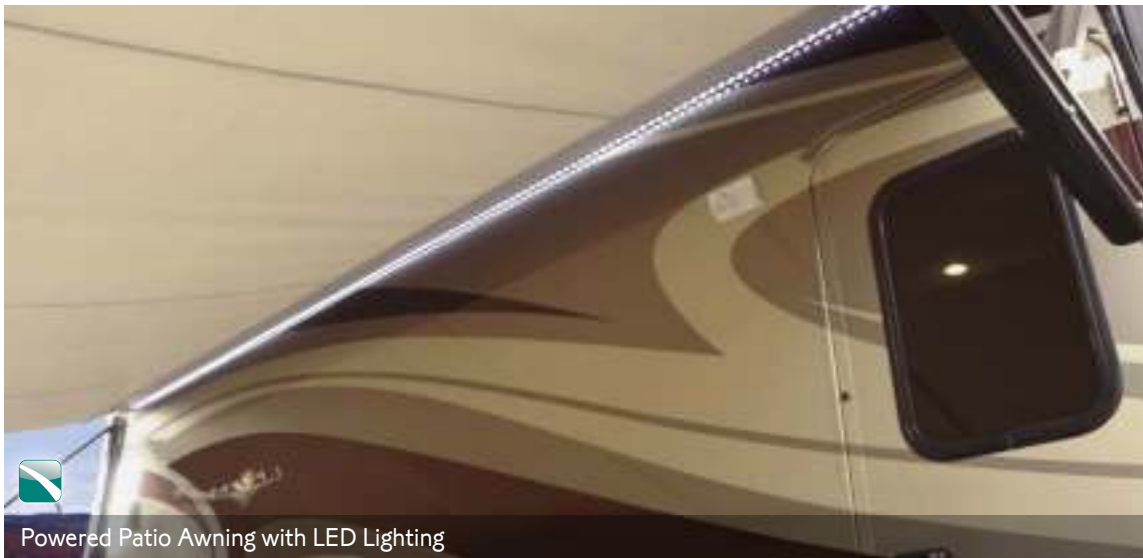
Dash Workstation



Powered Patio Awning with LED Lighting



Smart Storage™



Powered Patio Awning with LED Lighting



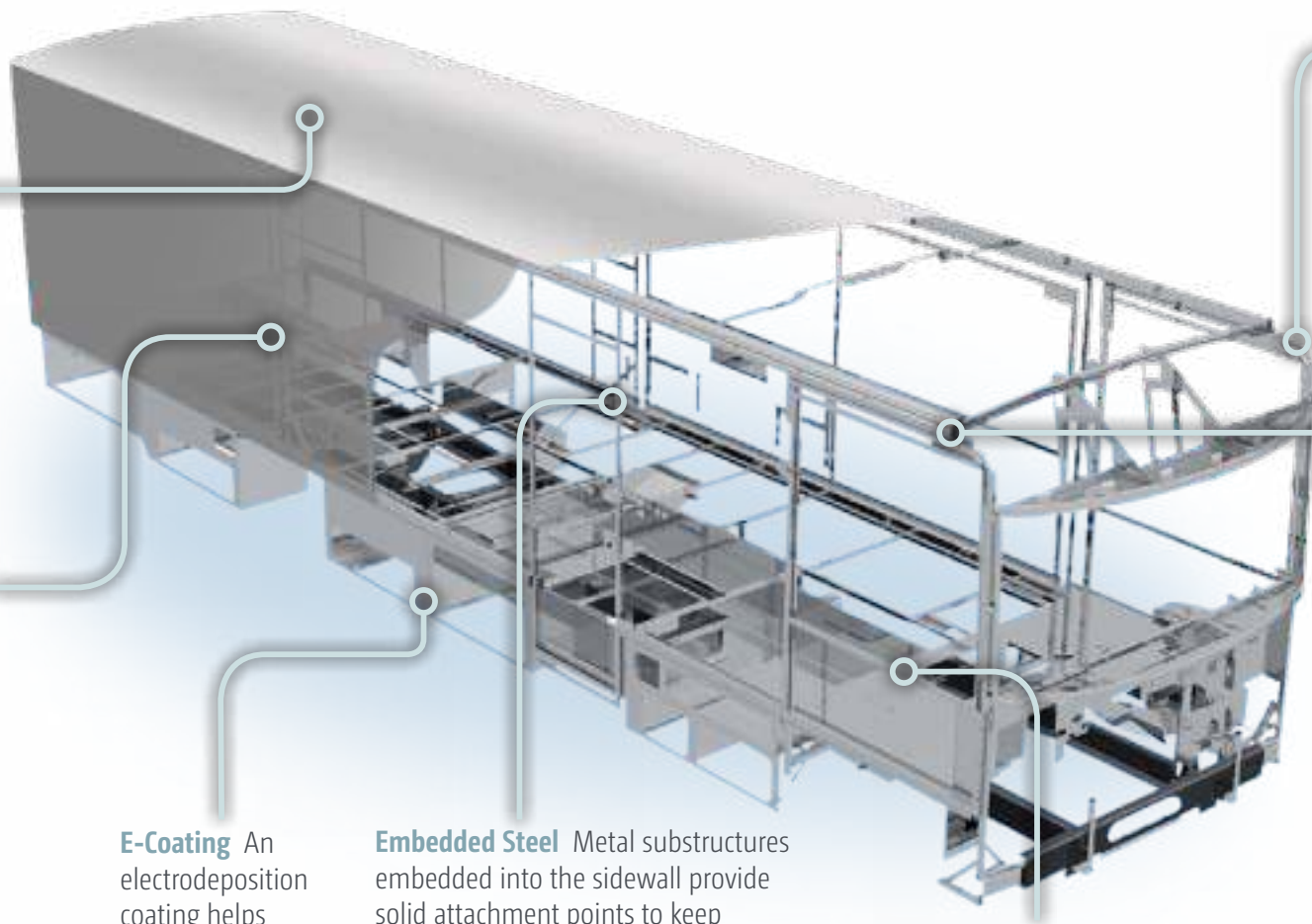
Available Exterior Entertainment Center



Exterior Service Center

With a powered patio awning and an available exterior entertainment center with a 32" HDTV, you'll thoroughly enjoy being in the great outdoors. Large storage compartments with single

paddle latches on the doors make it easy to access all your gear. A color-coded service center/wash station make hookups quick and convenient.



**Fiberglass Roof**

The crowned, one-piece fiberglass roof is backed by a 10-year limited parts-and-labor roof skin warranty.

**Rubber Can't Cut It**

Rubber roofs used by competitors can streak and degrade over time.

**Thermo-Panel® Sidewalls**

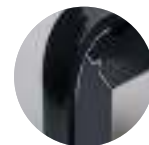
By layering fiberglass and high-density block foam insulation with welded aluminum support structures, we create some of the industry's strongest, most durable and lightweight sidewalls.

**E-Coating** An electrodeposition coating helps protect critical steel components.

**Embedded Steel** Metal substructures embedded into the sidewall provide solid attachment points to keep cabinets and appliances mounted securely in place.

**Laser-Cut Tubing**

Precision laser cutters create precise joints in structural steel that are stronger and require less welding.



**Interlocking Joints**

Specially engineered interlocking joints connect the floor, sidewalls and roof where competitors often rely on simple screws to bear the weight.



**Solid Framework** Aluminum extruded in our own facility to our exacting standards creates an extremely strong and solid structural framework.

**SUPER  
STRUCTURE**

BUILT TO LAST

Every coach—from our smallest Class C to our largest diesel-pusher model—is built to Winnebago Industries'® legendary SuperStructure® construction standards. It's a process developed and refined over more than 50 years of building some of the strongest, most durable coaches in the industry.

**TESTING** Before rolling out of our factories, every coach undergoes an extensive 113-point inspection. Each coach also passes a high-pressure water test that simulates rain at a rate of 50-inches per hour to check for leaks. During the design process, our computer simulations, physical testing center, and rigorous test track ensure each model is built to last.



**DETAILS** At Winnebago Industries, we treat the features you can't see with the same care as the ones you can. Look in the access panels of some of our competitors' coaches and you'll see loose insulation and wires haphazardly strewn about. Winnebago Industries maintains a clean fit and finish throughout so your coach will last for the long haul.



**BUILT IN-HOUSE** We extrude our own aluminum. We rotocast our own plastic components. In fact, we manufacture most of our own parts so they are designed to fit the space, rather than fitting the space to an awkward off-the-shelf component size.



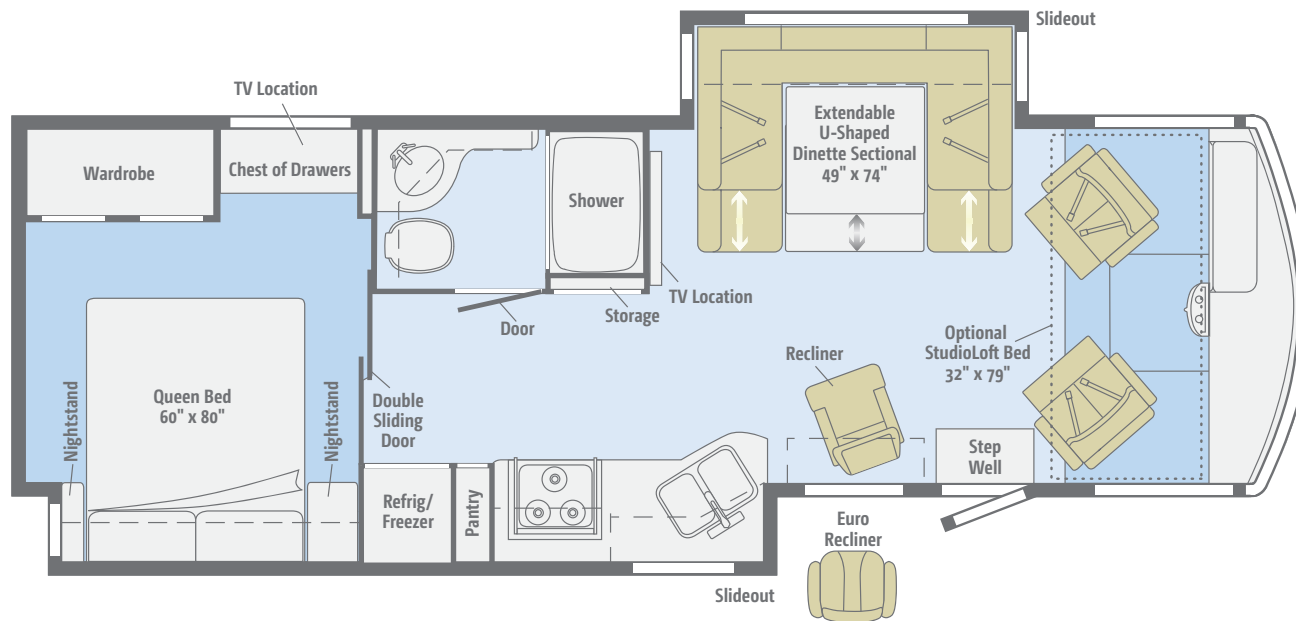
**SUPER  
STRUCTURE**<sup>®</sup>  
BUILT TO LAST

Visit [BetterBuiltRVs.com](http://BetterBuiltRVs.com) to gain real insight into what goes into a Winnebago Industries motorhome.

**TAKE A TOUR** We're proud of our processes, state-of-the-art facilities, and the people who make Winnebago Industries number one. We invite you to visit our complex in Forest City, Iowa, for a first-hand look at the dedication and technology behind every motorhome we build.



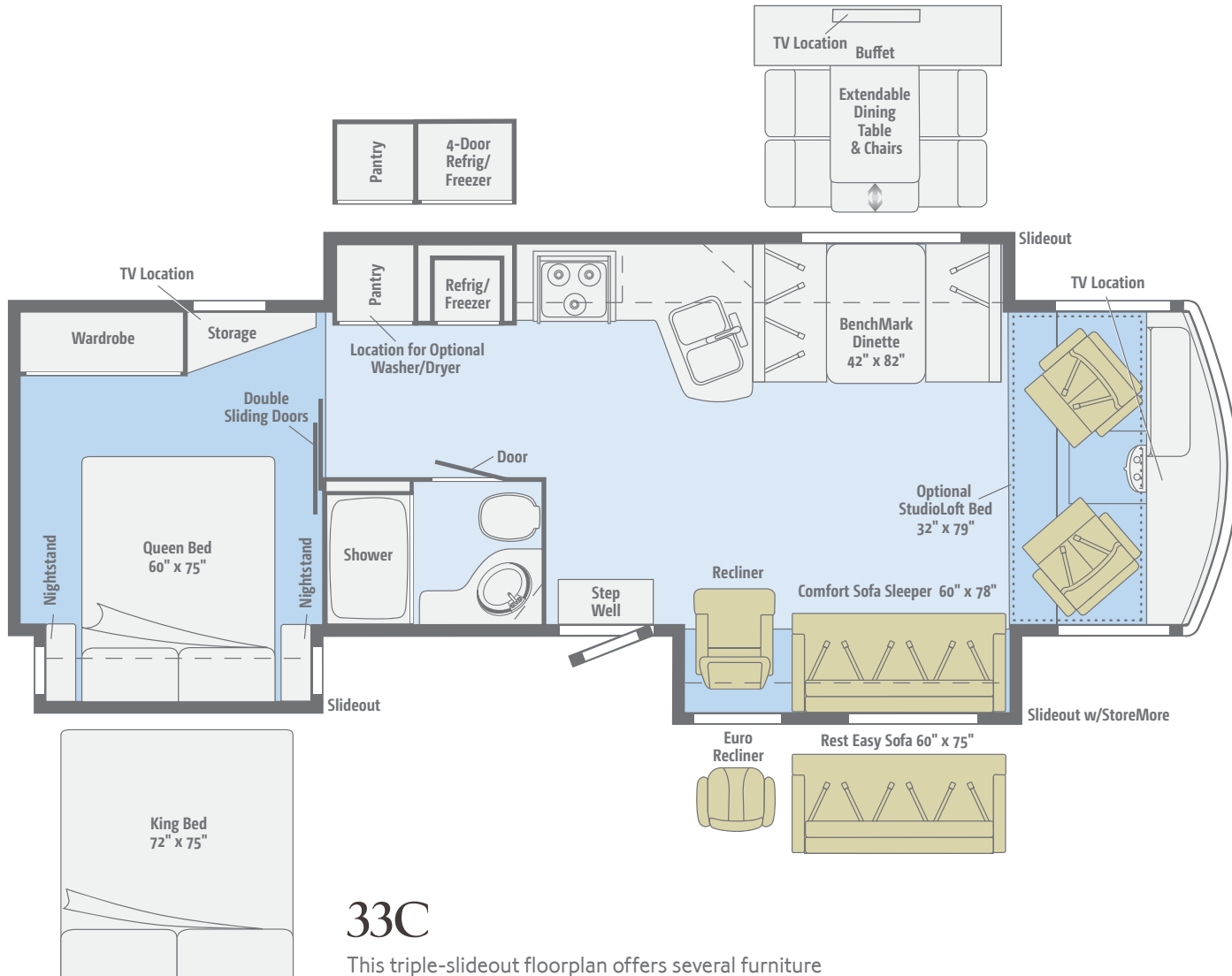
Dimensions shown are for sleeping space only and may vary due to styling differences. Dashed lines denote overhead storage areas. Floorplans and specifications are also available online at [Goltasca.com](http://Goltasca.com).



## 30A

With a mid-coach HDTV, an extendable U-shaped dinette, and a large wardrobe with a chest of drawers, this dual-slideout floorplan offers comfortable living spaces.

Dimensions shown are for sleeping space only and may vary due to styling differences. Dashed lines denote overhead storage areas. Floorplans and specifications are also available online at [Goltasca.com](http://Goltasca.com).

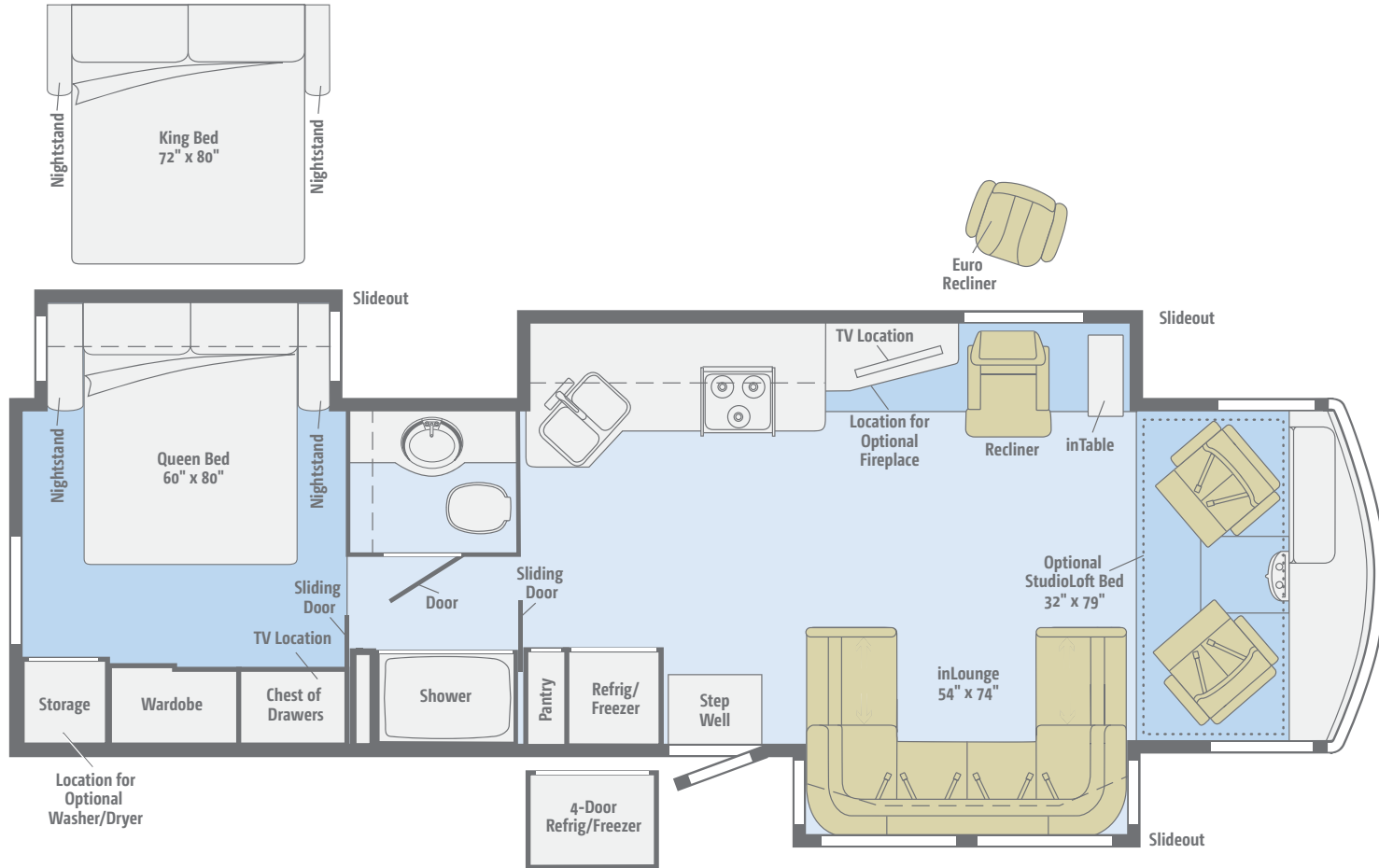


### 33C

This triple-slideout floorplan offers several furniture options such as the Rest Easy® sofa, Euro recliner, an extendable dining table/buffet with a retractable HDTV, and a king bed.

Dimensions shown are for sleeping space only and may vary due to styling differences. Dashed lines denote overhead storage areas. Floorplans and specifications are also available online at [Goltasca.com](http://Goltasca.com).

Standard Ultraleather	Vinyl	Carpet

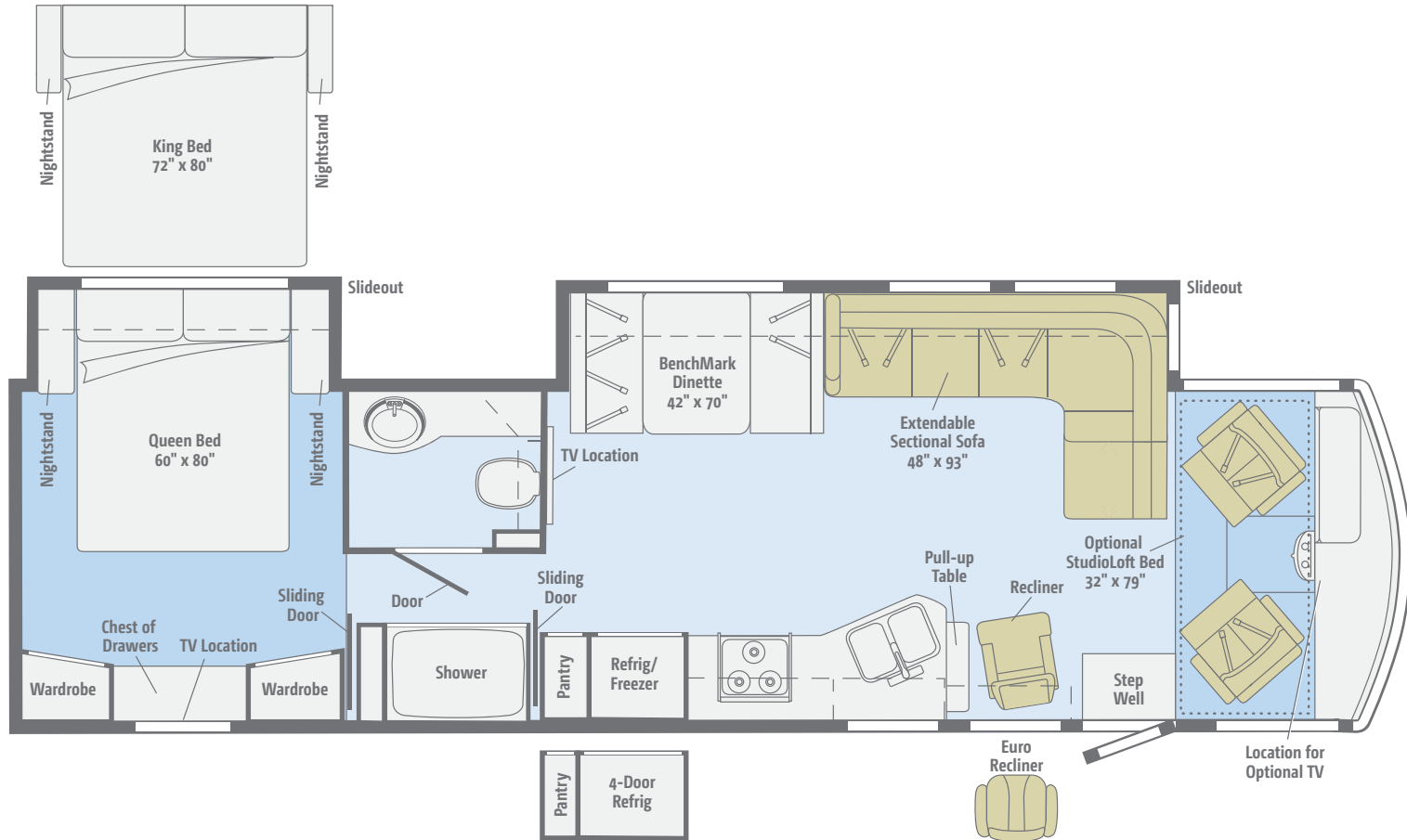


## 35G

Popular features in this comfortable, triple-slideout floorplan include an inLounge™ extendable sofa, a movable inTable™, and an optional fireplace.



Dimensions shown are for sleeping space only and may vary due to styling differences. Dashed lines denote overhead storage areas. Floorplans and specifications are also available online at [Goltasca.com](http://Goltasca.com).



## 36V

Functional amenities abound in this dual-slideout floorplan, including a BenchMark<sup>®</sup> dinette, an Extendable Sectional Sofa, an available king bed, and twin wardrobes.

Choose from three fabric collections and four wood choices, each with Satin Nickel hardware.

# Monument



Main



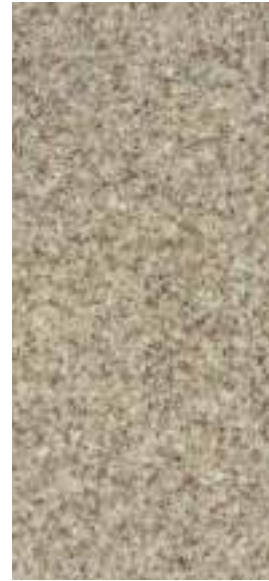
Ultraleather



Accent



Bedspread



Corian Countertop  
(Galley)



Wall Board



Carpet



Vinyl



Honey Cherry



Forest Cherry



Coffee-Glazed  
Vienna Maple



Coffee-Glazed  
Honey Cherry

Winnebago Industries® reserves the right to change décor materials and specifications without notice or obligation.

Choose from three fabric collections and four wood choices, each with Satin Nickel hardware.

# Falling Star



Main



Ultraleather



Accent



Bedsread



Corian Countertop  
(Galley)



Wall Board



Carpet



Vinyl



Honey Cherry



Forest Cherry



Coffee-Glazed  
Vienna Maple



Coffee-Glazed  
Honey Cherry

Winnebago Industries® reserves the right to change décor materials and specifications without notice or obligation.

Choose from three fabric collections and four wood choices, each with Satin Nickel hardware.

# Biscotti



Main



Ultraleather



Accent



Bedspread



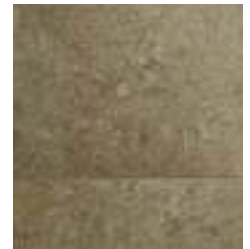
Corian Countertop  
(Galley)



Wall Board



Carpet



Vinyl



Honey Cherry



Forest Cherry



Coffee-Glazed  
Vienna Maple



Coffee-Glazed  
Honey Cherry

Winnebago Industries® reserves the right to change décor materials and specifications without notice or obligation.

Choose from four stylish full-body paint selections.



Cloud  
FULL-BODY PAINT



Denim  
FULL-BODY PAINT



Black Garnet  
FULL-BODY PAINT



Black Mist  
FULL-BODY PAINT

## Weights & Measures

	30A	33C	35G	36V
<b>Length</b>	31'1"	34'7"	36'5"	37'8"
<b>Exterior Height<sup>1</sup></b>	12'6"	12'5"	12'4"	12'5"
<b>Exterior Width<sup>2</sup></b>	8'5.5"	8'5.5"	8'5.5"	8'5.5"
<b>Exterior Storage<sup>3</sup> (cu. ft.)</b>	90.5	104	115.8	180.4
<b>Awning Length</b>	15'/6'	19'	18'	20'
<b>Interior Height</b>	6'8"	6'8"	6'8"	6'8"
<b>Interior Width</b>	8'0.5"	8'0.5"	8'0.5"	8'0.5"
<b>Freshwater Tank Capacity<sup>4</sup> (gal.)</b>	80	73	80	80
<b>Water Heater Capacity (gal.)</b>	6	10	10	6
<b>Holding Tank Capacity - Black/Gray<sup>4</sup> (gal.)</b>	38/53	39/60	38/50	38/50
<b>LP Capacity<sup>5</sup> (gal.)</b>	18	18	18	18
<b>Fuel Capacity (gal.)</b>	80	80	80	80
<b>GCWR<sup>6</sup> (lbs.)</b>	26,000	26,000	26,000	26,000
<b>GVWR (lbs.)</b>	22,000	22,000	22,000	22,000
<b>GAWR - Front (lbs.)</b>	8,000	8,000	8,000	8,000
<b>GAWR - Rear (lbs.)</b>	15,000	15,000	15,000	15,000
<b>Wheelbase</b>	190"	220"	228"	242"

## Cab Conveniences

**Cab seats** adjustable armrests, lumbar support and multi-adjustable slide/recline/swivel

**6-way power driver seat**

**3-point seat belts**

**Radio/Rearview Monitor System** 6" LCD color touch screen, remote, iPod®/MP3 input, rear color camera

**Chassis/house battery radio power switch**

**Power-assist steering w/tilt wheel**

**12-volt powerpoint**

**Cruise control**

**Power mirrors w/defrost and sideview cameras**

**Map lights**

**C.B. wire prep**

**MCD solar/blackout powered front shade**

**Solar shades for driver and passenger windows**

**Sideview camera system**

**Defroster fans**

**Dash workstation**

*Optional Equipment*

**Passenger seat w/footrest**

**SiriusXM™ receiver** (subscription not included), remote, iPod interface connector

## Interior

**32" HDTV, front overhead** (33C) (NA w/ optional StudioLoft™ or optional dining table/ buffet w/retractable HDTV)

**42" HDTV, mid-coach** (36V)

**42" HDTV mounted to a locking extendable slide system, mid-coach** (30A)

**46" HDTV, mid-coach** (35G)

**Amplified digital TV antenna system**

**Entertainment center w/46" HDTV, mid-coach** (35G)

**LED ceiling lights**

**Satellite system ready** (lounge and bedroom)

**Soft vinyl ceiling**

## CHASSIS

**Ford® F53 Chassis** 362-hp 6.8L 3-valve Triton® V10 SEFI engine, TorqShift™ 5-speed automatic transmission w/tow/haul, Hydro-Max power brakes, 4-wheel ABS, 175-amp. alternator

**7-pin trailer wiring**

**Trailer Hitch<sup>6</sup>** 5,000-lb. drawbar/500-lb. maximum vertical tongue weight

**Automatic hydraulic leveling jacks w/3-position controls**

**Stylized aluminum wheels w/22.5" tires**



Ford F53 Chassis

**MCD solar/blackout roller shades** (lounge, dinette, bath, bedroom)

**MCD blackout shades** (galley)

**OnePlace® systems center**

**Tinted, dual-glazed, thermo-insulated windows**

**Powered ventilator fan** (bedroom) (35G)

**Powered ventilator fan** (lounge)

**Powered roof vent** (bath)

**Key-activated slideroom master lock switch**

**Video Selection System**

**Washer/dryer prep** (33C, 35G)

*Optional Equipment*

**StudioLoft**

**32" HDTV, front overhead** (36V) (NA w/optional StudioLoft)

**46" HDTV, mid-coach** (35G)

**48" HDTV, mid-coach** (35G)

**Dining table/buffet/chairs w/retractable 39" HDTV** (33C)

**Vinyl floor covering throughout** (cab area and slideouts carpeted)

**Stackable washer/dryer** (33C, 35G)

**Electric fireplace** (35G)

**Winegard® Mission® automatic satellite TV antenna system**

**Home Theater Sound System** amplifier, DVD player, receiver, speakers, and subwoofer

## Galley

**Corian® solid-surface countertop, backsplash and sink covers**

**2-door refrigerator/freezer**

**Microwave/convection oven w/vented range hood**

**3-burner range top w/cover and storage below**

**Flip-up countertop extension** (33C)

*Optional Equipment*

**Large-capacity 2-door refrigerator/freezer w/icemaker and water filter** (30A)

**4-door refrigerator/freezer w/icemaker** (33C, 35G, 36V)

**3-burner range w/oven**

## Bath

**Laminate countertop**

**Flexible showerhead**

**Textured glass shower door**

**Skylight**

**Porcelain toilet**

## Bedroom

**Queen bed w/innerspring mattress and underbed storage** (30A, 33C, 36V)

**Queen powered bed w/Ideal Rest® Nouveau digital comfort control mattress w/remotes** (35G)

**Bedspread, pillows and shams**

**26" HDTV, DVD cable ready** (30A, 33C)

**28" HDTV, DVD cable ready** (35G, 36V)

*Optional Equipment*

**King Ideal Rest Nouveau digital comfort control mattress w/remotes** (33C, 36V)

**Powered king bed w/Ideal Rest Nouveau digital comfort control mattress w/remotes** (35G)

**King bed w/Ideal Rest Nouveau digital comfort control mattress w/remotes and underbed storage** (33C, 36V)

**Queen Ideal Rest Nouveau digital comfort control mattress w/remotes** (30A, 33C, 36V)

**28" HDTV, DVD cable ready** (30A, 33C)

## Exterior

**Automatic entrance door steps**

**Porch light**

**Lighted storage compartments**

**Premium smooth high-gloss skin**

**KeyOne™ lock system**

**Front mud flaps**

**Ladder**

**Powered patio awning w/LED lighting**

**Additional powered patio awning w/LED lighting** (above entrance door 30A)

**Lower front protective mask** (w/full-body paint)

*Optional Equipment*

**Entertainment Center** 32" HDTV w/adjustable bracket, AM/FM stereo, CD/DVD, remote, two speakers

## Heating & Cooling System

**Two high-efficiency roof air conditioners w/Energy Management System**

**35,000 BTU low-profile ducted furnace** (30A, 33C)

**40,000 BTU low-profile ducted furnace** (35G, 36V)

*Optional Equipment*

**Two high-efficiency air conditioners w/heat pumps**

## Electrical System

**AC/DC electrical distribution system, 55-amp. converter/charger**

**50-amp. power cord**

**5,500-watt Cummins Onan® Marquis Gold™ gas generator**

**Generator/shoreline automatic changeover switch**

**Two deep-cycle, Group 31 batteries**

**Chassis and coach battery disconnect systems**

**PowerLine® Energy Management System**

**Automatic dual-battery charge control**

**Auxiliary start circuit**

**Exterior antenna jack and AC duplex receptacle**

**1,000-watt inverter**

**Generator prep kit**

## Plumbing System

**Service Center** color-coded labels, cable TV input, pressurized city water hookup w/diverter valve, 3" drainage valve, portable satellite dish hookup, power cord, 10' sewer hose, QuickPort® exterior wash station w/lighted pump switch

**Permanent-mount LP tank**

**On-demand water pump**

**TrueLevel™ holding-tank monitoring system**

**Winterization Package** water heater bypass valve and siphon tube

**Heated holding-tank compartment**

**6-gallon 110 V/LP water heater w/motoraid/auto heater** (30A, 36V)

**10-gallon 110 V/LP water heater w/motoraid/auto heater** (33C, 35G)

**Gravity water tank fill w/lockable door**

**Holding tank flushing system**

**LPG accessory connection** (patio area)

## Safety

**Child seat tether anchor in forward-facing dinette seat** (30A, 36V)

**LP, smoke and carbon monoxide detectors**

**10 BC fire extinguisher**

**Ground fault interrupter**

**High-mount brake lamp**

## Warranty<sup>7</sup>

**12-month/15,000-mile basic limited warranty<sup>8</sup>**

**36-month/36,000-mile limited warranty on structure<sup>8</sup>**

**10-year limited parts-and-labor warranty on roof skin<sup>8</sup>**

- The height of each model is measured to the top of the tallest standard feature and is based on the curb weight of a typically equipped unit. The actual height of your vehicle may vary by several inches depending on chassis or equipment variations. Please contact your dealer for further information.
  - Floorplans feature a wide-body design – over 96". In making your purchase decision, you should be aware that some states restrict access on some or all state roads to 96" in body width. Before making your purchase decision, you should confirm the road usage laws in the states of interest to you.
  - The load capacity of your motorhome is designated by weight, not by volume, so you cannot necessarily use all available space when loading your motorhome.
  - Capacities are based on measurements prior to tank installation. Slight capacity variations can result due to installation applications.
  - Capacities shown are tank manufacturer's listed water capacity (W.C.). Actual filled LP capacity is 80% of listing due to overfilling prevention device on tank.
  - Actual towing capacity is dependent on your particular loading and towing circumstances, which includes the GVWR, GAWR, and GCWR as well as adequate trailer brakes. Please refer to the Operator's Manual of your vehicle for further towing information.
  - See separate chassis warranty.
  - See your dealer for complete warranty information.
- NA Not Available  
Not all items available in combination. See dealer for details.  
Winnebago Industries® continuing program of product improvement makes specifications, equipment, model availability, and prices subject to change without notice. Published content reflects the most current product information at time of printing. Please consult your dealer for individual vehicle features and specifications.

GOITASCA.COM  
HAS ALL THE ANSWERS



Visit **GoItasca.com** on your computer, smartphone or tablet for the latest product information and updates.

COMMITTED TO SERVICE

 **PREFERRED CARE PROGRAM**

We back our motorhomes with best-in-class support both before and after the sale:

- 12-month/15,000-mile basic limited warranty
- 36-month/36,000-mile limited warranty on structure
- 10-year limited parts-and-labor warranty on roof skin
- Complimentary 24-hour roadside assistance program



**TRIP**Saver  
FAST TRACK PARTS

- TripSaver® Fast Track Parts guarantees that in-stock warranty parts ship directly to your dealer within 24 hours
- National dealer service network



**LAMESA RV**  
EXPERIENCE LIFE  
[www.lamesarv.com](http://www.lamesarv.com)  
800-496-8778



**WIT CLUB**

JOIN THE CLUB, JOIN THE FUN

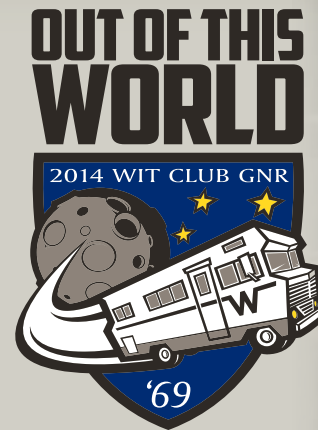
As an Itasca motorhome owner, you are invited to join the WIT Club. It's a great way to take full advantage of your new coach and meet fun-loving WIT Club members from across the country who make motorhome adventures a way of life.



**Members enjoy:**

- Caravans and rallies
- Newsletters
- Local and state group activities
- RV travel benefits

See more at **WITclub.com**



GRAND NATIONAL RALLY

In 1969, two things happened: Neil Armstrong took mankind's first steps on the moon, and Winnebago Industries' WIT Club launched its first Grand National Rally in Forest City, Iowa. Every year since then, thousands of rally-goers connect with old friends to enjoy concerts, tours, activities, and more. Blast off for an adventurous week in July to celebrate 45 years of interstate land roving at the 2014 "Out of This World" Grand National Rally. It's a mission you'll never forget!